



## 8-Cup Pour Over Coffee Maker { Instruction Manual

# Table of Contents

- Important Safeguards .....2-4
- Additional Important Safeguards .....5-6
- Notes on the Plug..... 6
- Notes on the Cord..... 7
- Plasticizer Warning..... 7
- Electric Power..... 7
- Carafe Safety Precautions..... 8
- Coffee Yield ..... 9
- Getting to Know Your **brim** 8-Cup Pour Over Coffee Maker..... 10
- Before Using for the First Time .....11
- Pour Over, Optimized .....11
- Brewing Coffee..... 12-13
- Brewing a Second Decanter of Coffee ..... 14
- SCA Gold Cup Standard..... 14
- Hints for Great Tasting Coffee ..... 15
- User Maintenance Instructions ..... 15
- Care & Cleaning Instructions..... 16
- Descaling.....17
- Storing Instructions .....17
- Warranty ..... 18-19
- Tasting Notes.....20-24

# IMPORTANT SAFEGUARDS

When using electrical appliances, basic safety precautions should always be followed, including the following:

## 1. READ ALL INSTRUCTIONS.

2. Do not touch hot surfaces. Always make sure the silicone sleeve is on the decanter when it is in use.
3. This appliance is not intended for use by persons (including children) with reduced physical, sensory or mental capabilities, or lack of experience and knowledge, unless they have been given supervision or instruction concerning use of the appliance by a person responsible for their safety.
4. Close supervision is necessary when any appliance is used by or near children.
5. In order to minimize the risk of property damage, never place the 8-Cup Pour Over Coffee Maker under cabinets. Make sure the area several feet above the 8-Cup Pour Over Coffee Maker is clear from all furniture or cabinetry.
6. Do not use outdoors.
7. Unplug unit from outlet when the appliance is not in use, and before cleaning. Allow unit to cool before putting on or taking off parts, and before cleaning.
8. To protect against fire, electric shock and injury to persons do not immerse cord, plugs, or appliance in water or other liquids.

9. Do not operate any appliance with a damaged cord or plug, or after the appliance malfunctions, or has been damaged in any manner. Return appliance to the nearest authorized service facility for examination, repair or adjustment. **NOTE: DO NOT ATTEMPT TO REPAIR THE UNIT YOURSELF. THIS WILL VOID THE WARRANTY.**
10. The use of accessory attachments not recommended by the appliance manufacturer may result in fire, electric shock or injury to persons.
11. Never move the appliance by pulling the cord. Do not let the cord hang over the edge of a table or counter or touch hot surfaces.
12. Stand the appliance on a table or flat surface.
13. Do not use a cracked glass decanter.
14. Only use the glass decanter with this appliance. Handle with care as the glass may become hot.
15. **CAUTION! When full, the glass decanter can be heavy and after brewing, it gets very hot! Avoid contact with the glass decanter. Use a firm grip on the silicone sleeve to hold.**
16. Never use your 8-Cup Pour Over Coffee Maker without water in the water reservoir.
17. Do not place the appliance on or near a hot gas or electric burner or in a heated oven.
18. The decanter is designed for use with this appliance. It must never be used on a range top.
19. Do not set hot glass decanter on a wet or cold surface.

20. Do not clean glass decanter with cleaners, steel wool pads, or other abrasive material.
21. Press the Power button to turn the appliance OFF. Unplug the power cord from the electrical outlet when the appliance is not in use, left unattended, or when the decanter is empty.
22. Do not use this appliance for other than its intended use.
23. To reduce the risk of fire, do not mount unit over or near any portion of a heating or cooking appliance.
24. To reduce the risk of electric shock, do not mount over a sink.
25. To reduce the risk of fire, do not store anything directly on top of the appliance surface when the appliance is in operation.
26. Scalding may occur if the filter and or filter holder is removed during the brewing cycle

## FOR HOUSEHOLD USE ONLY

## SAVE THESE INSTRUCTIONS

## ADDITIONAL IMPORTANT SAFEGUARDS

**WARNING: This appliance generates heat and escaping steam during use. Proper precautions must be taken to prevent the risk of burns, fires, or other injury to persons or damage to property.**

1. All users of this appliance must read and understand this Instruction Manual before operating or cleaning this appliance.
2. The cord to this appliance should be plugged into a 120V AC electrical outlet only.
3. Use water only in this appliance! Do not put any other liquids or food products in this appliance. Do not mix or add anything to the water placed in this appliance, except as instructed in the User Maintenance Instructions to clean the appliance.
4. DO NOT attempt to move an appliance containing hot liquids. Allow appliance to cool completely before moving.
5. Keep appliance at least 4 inches away from walls or other objects during operation. Do not place any objects on top of appliance while it is operating. Place the appliance on a surface that is resistant to heat.
6. If this appliance begins to malfunction during use, immediately unplug the cord. Do not use or attempt to repair the malfunctioning appliance.

7. If this appliance falls or accidentally becomes immersed in water or any other liquid, unplug it immediately. Do not reach into the water! Do not use this appliance after it has fallen into or has become immersed in water.
8. The appliance must be left to cool down sufficiently before adding more water to avoid exposure to steam.
9. Always use fresh, cool water in your appliance. Warm water or other liquids, except as listed in cleaning section, may cause damage to the appliance.
10. DO NOT put decanter into a microwave oven.
11. DO NOT leave empty decanter on warming plate when appliance is turned ON, as the decanter may crack or become otherwise damaged.

### Notes on the Plug

This appliance has a polarized plug (one blade is wider than the other). To reduce the risk of electric shock, this plug will fit in a polarized outlet only one way. If the plug does not fit fully into the outlet, reverse the plug. If it still does not fit, contact a qualified electrician. Do not modify the plug in any way.

### Notes on the Cord

- a) A short power-supply cord is provided to reduce risks resulting from becoming entangled in or tripping over a longer cord.
- b) A longer power-supply cord or extension cords are available and may be used if care is exercised in their use.
- c) If a longer power-supply cord or extension cord is used:
  - 1) The marked electrical rating of the power-supply cord or extension cord should be at least as great as the electrical rating of the appliance;
  - 2) If the appliance is of the grounded type, the extension cord should be a grounding- type 3-wire cord; and
  - 3) The longer cord should be arranged so that it will not drape over the counter top or table top where it can be pulled on by children or tripped over.

### Plasticizer Warning

**CAUTION:** To prevent Plasticizers from migrating to the finish of the counter top or table top or other furniture, place NON-PLASTIC coasters or place mats between the appliance and the finish of the counter top or table top. Failure to do so may cause the finish to darken; permanent blemishes may occur or stains can appear.

### Electric Power

If the electrical circuit is overloaded with other appliances, your Conical Burr Grinder may not operate properly. It should be operated on a separate electrical circuit from other appliances.

## Carafe Safety Precautions

1. Do not use a cracked or chipped decanter.
2. Do not use a decanter with a worn, torn rubber sleeve or without the rubber sleeve properly attached.
3. This decanter is designed to be used only on the warming plate of your 8-Cup Pour Over Coffee Maker. Do not use in a conventional oven.
4. To avoid breakage, handle decanter with care. Avoid impact. Glass will break as a result of impact. Use care when filling with water to avoid hitting faucet.
5. Do not place hot decanter on cool or wet surface. Allow decanter to cool before washing or adding liquids.
6. Do not set empty decanter on a hot heating surface.
7. Do not clean with steel wool pads, abrasive cleanser, or any other materials that may scratch.
8. Do not bump or scratch the decanter. Remove decanter from the warming plate to avoid burning or scorching. Never operate the Coffee Maker with a decanter that has boiled dry.
9. Discard decanter if it is cracked, scratched, or heated while empty for an extended period of time

## Coffee Yield

8-Cup Pour Over Coffee Maker: 8 (5 oz.) cups

**NOTE:** A 5-oz.cup is the American industry standard and is used by most Coffee Maker manufacturers. To fill your favorite over-sized mug, fill the 8-Cup Pour Over Coffee Maker reservoir with enough water for 3 to 4 cups (15 to 20 ounces).

**NOTE:** The amount of brewed coffee will always be less than the amount of water placed into the water reservoir; as much as 10% may be absorbed by coffee grounds and steam loss.

**WARNING: TO AVOID THE RISK OF FIRE OR ELECTRIC SHOCK, DO NOT UNSCREW THE UNDER SIDE COVER. THERE ARE NO USER-SERVICEABLE PARTS INSIDE. REPAIR SHOULD BE DONE BY AUTHORIZED SERVICE PERSONNEL ONL**

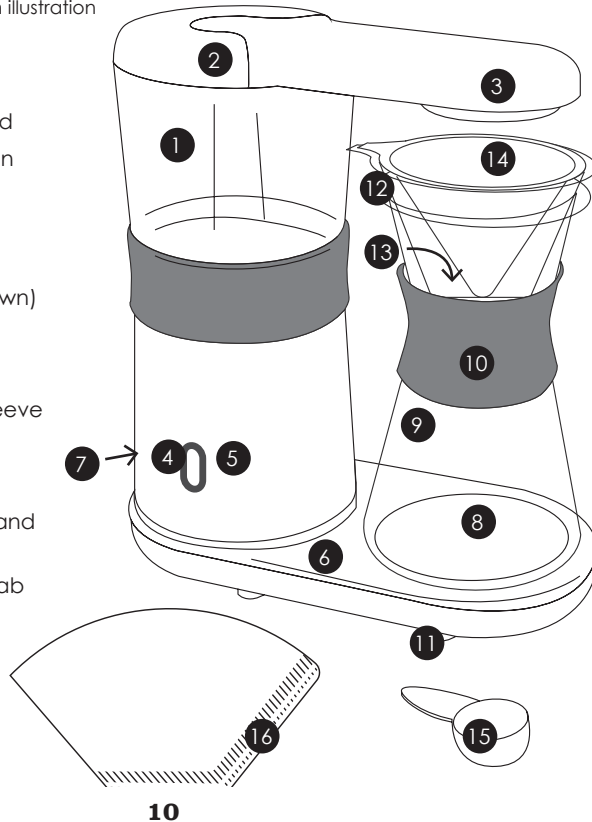
## Permanent Coffee Filter Basket

The permanent laser etched stainless steel coffee filter takes the place of disposable paper filters. Simply place the permanent coffee filter basket into the filter basket holder. Use the handle tab to lift the filter basket of used coffee grounds up and off the decanter.

## Getting to Know Your brim 8-Cup Pour Over Coffee Maker

Product may vary slightly from illustration

1. Water Reservoir
2. Water Reservoir Lid
3. Pour Over Shower Head
4. BREW/OFF Power Button
5. BREW/CLEAN power Indicator Light
6. Base
7. Polarized Plug (not shown)
8. Warming Plate
9. Glass Decanter
10. Removable Silicone Sleeve
11. Non-skid Feet
12. Plastic Filter Holder
13. Silicone Filter Holder Stand (not shown)
14. Permanent Filter with Tab
15. Measuring Scoop
16. 20 No 4 Cone Coffee Filters



## Before Using for the First Time

**CAUTION:** To protect against electrical shock, do not immerse the 8-Cup Pour Over Coffee Maker or allow the power cord to come into contact with water or other liquids.

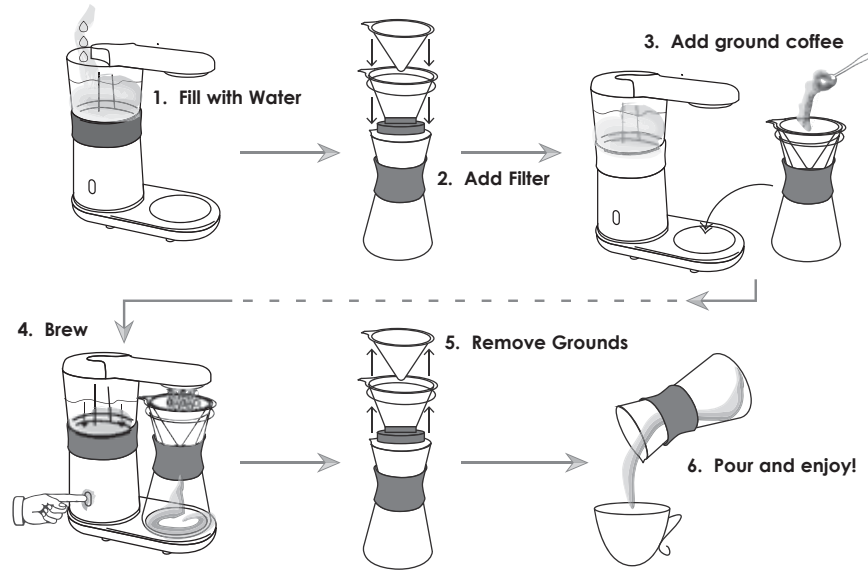
1. Remove all packing material and labels from the inside and outside of the 8-Cup Pour Over Coffee Maker.
2. Place the unit on a flat, clean surface.
3. Before preparing coffee, thoroughly clean the glass decanter, filter holder and permanent filter in hot, sudsy water. Rinse and dry. See Care & Cleaning Instructions for a detailed description.
4. It is highly recommended to fill the decanter with 1 part white vinegar to 2 parts cold water. Pour water and vinegar solution into the water reservoir. Do not add the permanent coffee filter or ground coffee filter for this. Press the BREW button and let the brew cycle complete.
5. Remove the decanter from the warming plate and allow liquid to cool for 15 minutes. Repeat a 2nd time if desired
6. Rinse the unit by brewing a full decanter of cold water.
7. At end of BREW cycle, press the BREW button to turn the 8-Cup Pour Over Coffee Maker OFF. Discard water in the decanter. Wash decanter, permanent coffee filter, and filter holder in hot sudsy water. Dry parts thoroughly.
8. Wait an additional 15 minutes to allow the unit to cool before brewing your first decanter of coffee.

## Pour Over. Optimized

 Visit [www.brim.coffee](http://www.brim.coffee) for easy to follow step-by-step video tutorials.

We get it—you want pour over coffee in the comfort of your kitchen. And you want more than a cup at a time. This is pour over, optimized. A thoughtfully designed shower head utilizes pulse brewing to evenly water your coffee bed and achieve the perfect bloom. No paper filter necessary. Our permanent fine-mesh filter allows essential coffee oils to pass through, resulting in 8-cups of smooth, full-bodied coffee. A carafe of craft coffee without the fuss.

## Brewing Coffee



**1. Fill with Water:** Remove the water reservoir lid. Use the decanter to pour the desired amount of cold water into the water reservoir. Place back the water reservoir lid.

**IMPORTANT:** Before brewing always check to make sure that the water level is at least 5.5oz. (add water if needed.) Never exceed the 8-cup fill line. **NOTE:** The amount of brewed coffee will always be less than the amount of water placed into the water reservoir; as much as 10% is absorbed by coffee grounds and filter.

**WARNING!** This Coffee Maker is equipped with a WATER DRY ALARM. If the BREW/OFF power button is pressed when the water reservoir is empty, 5 beeps will sound. Water must be added to the water reservoir before the brewing process can begin.

**2. Add Filter:** Add the filter with filter holder with the filter stand attached into the neck of the empty decanter. Then nest the permanent coffee filter into the filter holder. The filter stand helps the basket to stand by itself when adding filters, coffee, or after you have removed it to set aside. It also helps to keep the heat in the carafe longer. **NOTE:** A paper filter may be used for very fine grinds or for cleaner and sweeter tasting coffee.

**3. Add ground coffee:** approximately 1 level coffee scoop (included) is recommended for each cup of coffee brewed. For stronger or milder coffee, adjust amount of ground coffee to suit your taste. Place empty decanter with filters and ground coffee onto the warming plate. Plug Coffee Maker into a 120V AC electrical wall outlet.

**4. Brew:** Press the BREW/OFF power button. The button will illuminate white as the Coffee Maker begins the BREW cycle. Water will begin to visibly pump up and through the shower head onto the grounds. **NOTE:** To interrupt the BREW cycle at any time, press the BREW/OFF power button; then remove plug from wall outlet.

**5. Remove used grounds:** Upon completion of the BREW cycle, 3 beeps will sound. Wait at least 1 minute until all of the brew dripping from the shower head into the decanter has stopped. Carefully grasp the decanter's silicone sleeve to remove from the warming plate.

**CAUTION!** When full, the glass decanter can be heavy. Use a firm grip on the silicone sleeve to hold. **CAUTION!** After brewing, the glass decanter gets very hot! Avoid contact with the glass decanter. Use the tabs on the filter holder and permanent filter to lift filters up and off the top of the decanter. Set aside, dispose of used coffee grounds.

**6. Pour and enjoy!** Tilt the decanter slightly and pour hot coffee very slowly, so that the flow of the brewed coffee does not exceed the width of the spout.

7. Replace the decanter with unused coffee onto the warming plate. The 8-Cup Pour Over Coffee Maker will advance to a 30 minute KEEP WARM phase, the BREW/CLEAN power indicator light will remain illuminated white. At the end of the KEEP WARM phase, the Coffee Maker will beep 3 times and turn OFF automatically.

8. Press the BREW power button to turn the 8-Cup Pour Over Coffee Maker OFF when the decanter is empty or when the unit is not in use; then remove plug from wall outlet. **IMPORTANT!** When the BREW/OFF power indicator light begins to flash red and white, the Coffee Maker is ready for descaling. Please consult the Descaling section of this Instruction Manual for detailed procedures.



## Brewing a Second Decanter of Coffee

1. To brew another decanter of coffee, make sure the 8-Cup Pour Over Coffee Maker is OFF. It is recommended that the 8-Cup Pour Over Coffee Maker be allowed to cool for 15 minutes between cycles.

**CAUTION:** Failure to allow Coffee Maker to cool sufficiently could cause hot steam and spray when the water is added to the water reservoir. The hot steam can cause severe burns.

2. Remove the filter holder and permanent coffee filter; discard used coffee grounds.
3. Rinse the glass decanter, filter holder and permanent filter in cool, clean water.
4. Following the instructions previously outlined in the Brewing Coffee section of this Instruction Manual, add water to the water reservoir, use the coffee scoop to add ground coffee to the permanent coffee filter, place the empty decanter on the warming plate. Press the BREW/OFF power button. The button will illuminate white as the Coffee Maker begins the BREW cycle.

## SCA Gold Cup Standard

The 8-Cup Pour Over Coffee Maker can help you achieve the Specialty Coffee Association Gold Cup Standard, it creates the perfect environment to brew Gold Cup coffee. You need more coffee grounds to water ratio when preparing Gold Cup coffee versus a standard cup of coffee. A standard scoop of coffee is 5g, the BRIM measuring scoop is 8.25g. The larger scoops makes it easier to measure coffee grounds for the Gold Cup Standard to be brewed. Either fill water to the 8-cup line on the water reservoir and add 8 level scoops of coffee, or fill water to the optimum line and add just under 7 level scoops.

It's as simple as that to enjoy the perfect Gold Cup Standard!

## Hints for Great Tasting Coffee

- A clean Coffee Maker is essential for making great tasting coffee. Regular cleaning, as described in the Care & Cleaning Instructions and Descaling sections of this Instruction Manual is highly recommended.
- Always use fresh, cold water in 8-Cup Pour Over Coffee Maker.
- Finer grinds promote fuller extraction and provide rich, full-bodied coffee. Regular grinds will require slightly more coffee per cup to provide the strength of a finer grind.
- Store coffee beans or ground coffee in a cool, dry place. Once coffee has been opened, keep it tightly sealed in the refrigerator or freezer to maintain freshness.
- For optimum coffee flavor, buy whole beans and grind them to your liking, just before brewing.
- Do not re-use coffee grounds since this will greatly impair coffee flavor.
- Reheating coffee is not recommended. Coffee is at its peak flavor immediately after brewing.
- Small oil droplets on the surface of brewed, black coffee are due to the extraction of oil from the coffee grounds. Oiliness may occur more frequently if heavily roasted coffee beans are used. Over extraction may also cause oiliness, indicating a need to clean your 8-Cup Pour Over Coffee Maker.

## User Maintenance Instructions

This appliance requires little maintenance. It contains no user-serviceable parts. Any servicing requiring disassembly other than cleaning must be performed by a qualified appliance repair technician.

## Care & Cleaning Instructions

1. Always make sure the 8-Cup Pour Over Coffee Maker is unplugged and the warming plate is cool before attempting to clean.
2. After every use, remove the permanent coffee filter, discard used coffee grounds, rinse thoroughly. Wash the filter holder and glass decanter in hot, sudsy water. You can also remove the silicone sleeve to clean underneath it. The glass decanter, filter holder and removable silicone filter stand, permanent filter, scoop and silicone sleeve are all top rack dishwasher safe.  
**WARNING:** To avoid breakage, handle decanter with care. Avoid impact. Glass will break as a result of impact. Use care when filling with water to avoid hitting faucet.
3. Wipe the exterior with a damp cloth to remove superficial stains. For stubborn stains, use a nylon or plastic pad with a non-abrasive cleanser. Do not use metal scouring pads or abrasive cleansers.
4. When the BREW/OFF power indicator light begins to flash red and white, the 8-Cup Pour Over Coffee Maker is ready for descaling.

## Descaling

Special cleaning of your 8-Cup Pour Over Coffee Maker is recommended depending on the frequency of use and quality of water used in the unit. If water in your area is especially hard, the following cleaning procedure should be performed more frequently, since minerals in water can detract from the flavor of the coffee and possibly lengthen brew time. While brewing, if the BREW/CLEAN power indicator light begins to alternate from red to white, then the 8-Cup Pour Over Coffee Maker should be descaled.

1. Fill decanter with 1 part white vinegar to 2 parts cold water. Pour water and vinegar solution into the water reservoir.
2. Press and hold the BREW/OFF power button for 2 seconds until the BREW/CLEAN power indicator light illuminates solid red. The 8-Cup Pour Over Coffee Maker will begin the CLEAN cycle until all water has been circulated and the water reservoir is empty. The BREW/CLEAN power indicator light will turn off when the descaling operation is complete.  
**NOTE:** Press the BREW/OFF power button at any time during the CLEAN cycle to turn the 8-Cup Pour Over Coffee Maker OFF. When liquid stops dripping from the shower head into the decanter, remove the decanter from the warming plate and allow liquid to cool for 15 minutes.
3. Rinse the unit by brewing a full decanter of cold water.
4. At end of BREW cycle, press the BREW button to turn the 8-Cup Pour Over Coffee Maker OFF. Discard water in the decanter. Wash decanter, permanent coffee filter, and filter holder in hot sudsy water. Dry parts thoroughly.
5. When Coffee Maker has cooled, wipe exterior with a dry cloth.

## Storing Instructions

1. Unplug unit and allow to cool.
2. Store the 8-Cup Pour Over Coffee Maker in its box or in a cool, dry place.
3. Never store unit while it is still plugged in.

## Limited Two-Year Warranty

SENSIO Inc. hereby warrants that for a period of **TWO YEARS** from the date of purchase, this product will be free from mechanical defects in material and workmanship, and for 90 days in respect to non-mechanical parts. At its sole discretion, SENSIO Inc. will either repair or replace the product found to be defective, or issue a refund on the product during the warranty period.

The warranty is only valid for the original retail purchaser from the date of initial retail purchase and is not transferable. Keep the original sales receipt, as proof of purchase is required to obtain warranty validation. Retail stores selling this product do not have the right to alter, modify, or in any way revise the terms and conditions of the warranty.

### Exclusions:

The warranty does not cover normal wear of parts or damage resulting from any of the following: negligent use of the product, use of improper voltage or current, improper routine maintenance, use contrary to the operating instructions, disassembly, repair, or alteration by anyone other than qualified SENSIO Inc. personnel. Also, the warranty does not cover Acts of God such as fire, floods, hurricanes, or tornadoes.

SENSIO Inc. shall not be liable for any incidental or consequential damages caused by the breach of any express or implied warranty. Apart from the extent prohibited by applicable law, any implied warranty of merchantability or

fitness for a particular purpose is limited in time to the duration of the warranty. Some states, provinces or jurisdictions do not allow the exclusion or limitation of incidental or consequential damages, or limitations on how long an implied warranty lasts, and therefore, the above exclusions or limitations may not apply to you. The warranty covers specific legal rights which may vary by state, province and/or jurisdiction.

### How To Obtain Warranty Service:

You must contact Customer Service at our toll-free number: 1-866-832-4843. A Customer Service Representative will attempt to resolve warranty issues over the phone. If the Customer Service Representative is unable to resolve the problem, you will be provided with a case number and asked to return the product to SENSIO Inc. Attach a tag to the product that includes: your name, address, daytime contact telephone number, case number, and description of the problem.

Also, include a copy of the original sales receipt. Carefully package the tagged product with the sales receipt, and send it (with shipping and insurance prepaid) to SENSIO Inc.'s address. SENSIO Inc. shall bear no responsibility or liability for the returned product while in transit to SENSIO Inc.'s Customer Service Center.

**brim**<sup>®</sup>  
since 1961

Perfect the art of coffee tasting.  
For tips on how to use the **brim** tasting wheel visit [www.brim.coffee](http://www.brim.coffee)

Coffee Origin/Name: \_\_\_\_\_

Roaster: \_\_\_\_\_ Roast Date \_\_\_\_\_

Variety: \_\_\_\_\_

Price: \_\_\_\_\_ Brew Date: \_\_\_\_\_

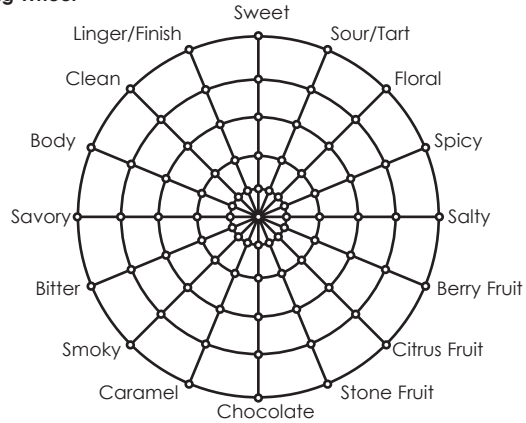
Notes: \_\_\_\_\_

\_\_\_\_\_

\_\_\_\_\_

\_\_\_\_\_

**Tasting Wheel**



**Rating**



**brim**

Coffee Origin/Name: \_\_\_\_\_

Roaster: \_\_\_\_\_ Roast Date \_\_\_\_\_

Variety: \_\_\_\_\_

Price: \_\_\_\_\_ Brew Date: \_\_\_\_\_

Notes: \_\_\_\_\_

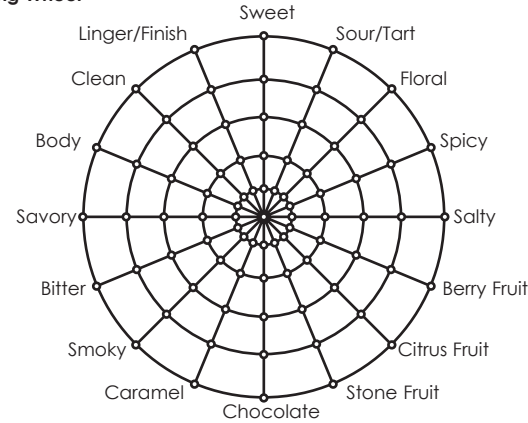
\_\_\_\_\_

\_\_\_\_\_

\_\_\_\_\_

\_\_\_\_\_

**Tasting Wheel**



**Rating**



**brim**

Coffee Origin/Name: \_\_\_\_\_

Roaster: \_\_\_\_\_ Roast Date \_\_\_\_\_

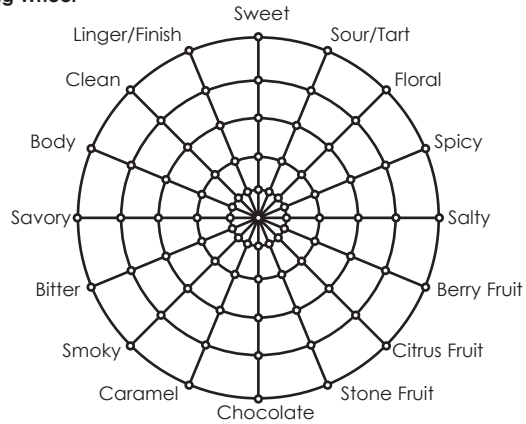
Variety: \_\_\_\_\_

Price: \_\_\_\_\_ Brew Date: \_\_\_\_\_

Notes: \_\_\_\_\_

\_\_\_\_\_  
\_\_\_\_\_  
\_\_\_\_\_  
\_\_\_\_\_  
\_\_\_\_\_

**Tasting Wheel**



**Rating**



**brim**

Coffee Origin/Name: \_\_\_\_\_

Roaster: \_\_\_\_\_ Roast Date \_\_\_\_\_

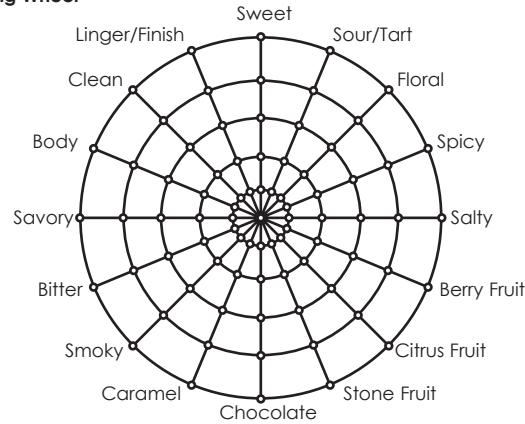
Variety: \_\_\_\_\_

Price: \_\_\_\_\_ Brew Date: \_\_\_\_\_

Notes: \_\_\_\_\_

\_\_\_\_\_  
\_\_\_\_\_  
\_\_\_\_\_  
\_\_\_\_\_  
\_\_\_\_\_

**Tasting Wheel**



**Rating**



**brim**

Coffee Origin/Name: \_\_\_\_\_

Roaster: \_\_\_\_\_ Roast Date \_\_\_\_\_

Variety: \_\_\_\_\_

Price: \_\_\_\_\_ Brew Date: \_\_\_\_\_

Notes: \_\_\_\_\_

\_\_\_\_\_

\_\_\_\_\_

\_\_\_\_\_

\_\_\_\_\_

**Tasting Wheel**



**Rating**



**brim**

Perfect the art of artisanal brewing  
and discover great video tutorials, recipes,  
tips & more by following us.

@brimcoffee      [www.brim.coffee](http://www.brim.coffee)

Copyrights and Trademarks of BRIM Brands, LLC, including BRIM™ and BRIM®,  
are used under license from BRIM Brands, LLC.

Sensio Inc., Montréal, Canada H3B 3X9

**For customer service questions or comments 1-866-832-4843**

SO-314758 Rev.2